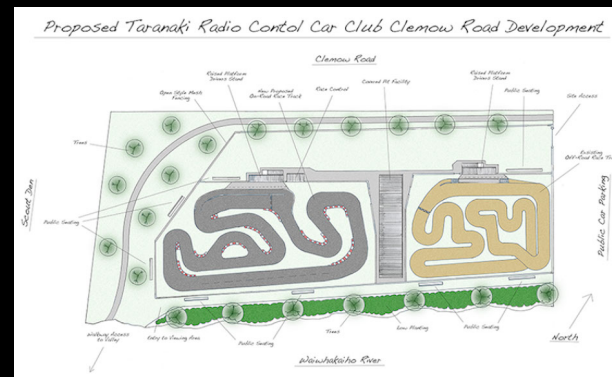


Future Developments

Taranaki Radio Control Car Club has been racing at the Paritutu Race Track on Centennial Drive in New Plymouth for 44 years. The New Plymouth District Council has recently extended the lease the club has on the beautifully scenic piece of land in Fitzroy. The club is intending to build world class new onroad track at this venue, similar to the one pictured below.



We are offering three levels of sponsorship for this project, which for a business may be 100% Tax deductible. If you are interested please contact us and we will provide you with an invoice.



CENTENNIAL DRIVE AND CLEMOW ROAD NEW PLYMOUTH

CLUB INFORMATION



40+ years and still going strong!

www.trccc.org.nz

Subscriptions

- Adult Membership: \$70 per year
- Student & senior citizen: \$35 per year
- Associated Membership: \$10 per year
- Family (conditions apply): \$120 per year

Race Day Fees

- Members: 1 car - \$10, 2 or more - \$15
- Non Members: First event free then membership required

The racing year runs from the 1st May till the 30th of April with our AGM held in mid May. Membership forms are available on the website, please feel free to download a copy, fill out and submit along with the appropriate fees.

More Information

If you want to know more about the Taranaki Radio Control Car Club please feel free to visit our website, facebook page or contact us at info@trccc.org.nz



Check out a video of some racing!



GOLD SPONSOR OVER \$1000
A beautifully presented plaque permanently mounted on display within the complex in a dedicated gold area as a permanent reminder of your generosity.



SILVER SPONSOR \$500
A beautifully presented plaque permanently mounted on display within the complex in a dedicated silver area as a permanent reminder of your generosity.



BRONZE SPONSOR \$250
A beautifully presented plaque permanently mounted on display within the complex in a dedicated bronze area as a permanent reminder of your generosity.



Taranaki Radio Control Car Club Inc.

Taranaki Radio Control Car Club Inc. (TRCCC) has been in existence since 1978, and consists of a friendly and enthusiastic group, ranging in age from 6 to 80+, who all have one thing in common, they love racing Radio Control Cars.

TRCCC welcomes people of all ages, male and female to join us in this popular sport of Radio Control Car Racing.

Public Viewing

Admission is free to the public on all Club race days and National events, simply come along and enjoy. Feel free to ask questions as members will be more than willing to help you.

Lap Scoring

TRCCC uses MYLAPS transponders and LiveRC Race Management software to automatically lap-score our races. This is "state of the art" technology and produces race analysis of individual lap times down to the thousandths of a second.

Our National Body

TRCCC is affiliated to the New Zealand Radio Control Association (NZRCA) which provides standardisation of class & racing rules for all affiliated clubs around New Zealand, as well as sanctioning open race meetings at various times and places throughout the year.

Both the cars that are raced and the race meetings themselves must comply with these rules that have been written in the interest of fairness to competitors, and for the promotion of the sport.

Members of our Club regularly compete in National and International events with mixed results. This is a great way to meet new people and drivers from all over who share a common interest. TRCCC occasionally hosts some National Competitions

Onroad Racing

TRCCC has a permanent outdoor on road sealed circuit located on Centennial Drive, New Plymouth at the base of Paritutu rock, overlooking the New Plymouth Power Station and Port Taranaki.

It is just 10 minutes from the centre of New Plymouth, and has been marked for easy reference on the street map below. The track is available anytime for anyone with a Radio Control Car to use.



On Road Club race days are held all year round weather permitting. These are held on the first Sunday of every month. Registrations can be done on line or on race day, racing starts at 11:30am, and you needn't be a member to race.

TRCCC On Road Racing caters for both Internal Combustion (Gas or IC) and Electric classes depending on what turns up, with the new track development we hope to expand our range of classes soon.

Offroad Racing

TRCCC has Off Road tracks located on Clemow Road, Fitzroy, New Plymouth at the end of the road on the right hand side just before you turn left to go down to Lake Rotomanu.

It is also just 10 minutes from the centre of New Plymouth, but on the east side of the City Centre and has been marked for easy reference on the street map below. The track also is available anytime for anyone with a Radio Control Car to use



Off Road Club race days are held all year round weather permitting. These are held on the third Sunday of every month. Registrations can be done on line or on race day, racing starts at 11:00am, and you needn't be a member to race.

TRCCC Off Road Racing caters for both Internal Combustion (Gas or IC) and Electric classes 1/8th and 1/10th basically depending on what turns up. Examples of these cars can be seen on our website in the gallery.

